

Barnet Community Food Growing Network

Leadership Programme



Katherine Carr – Public Health Officer

Harriet Duffield – Biodiversity and Conservation Officer

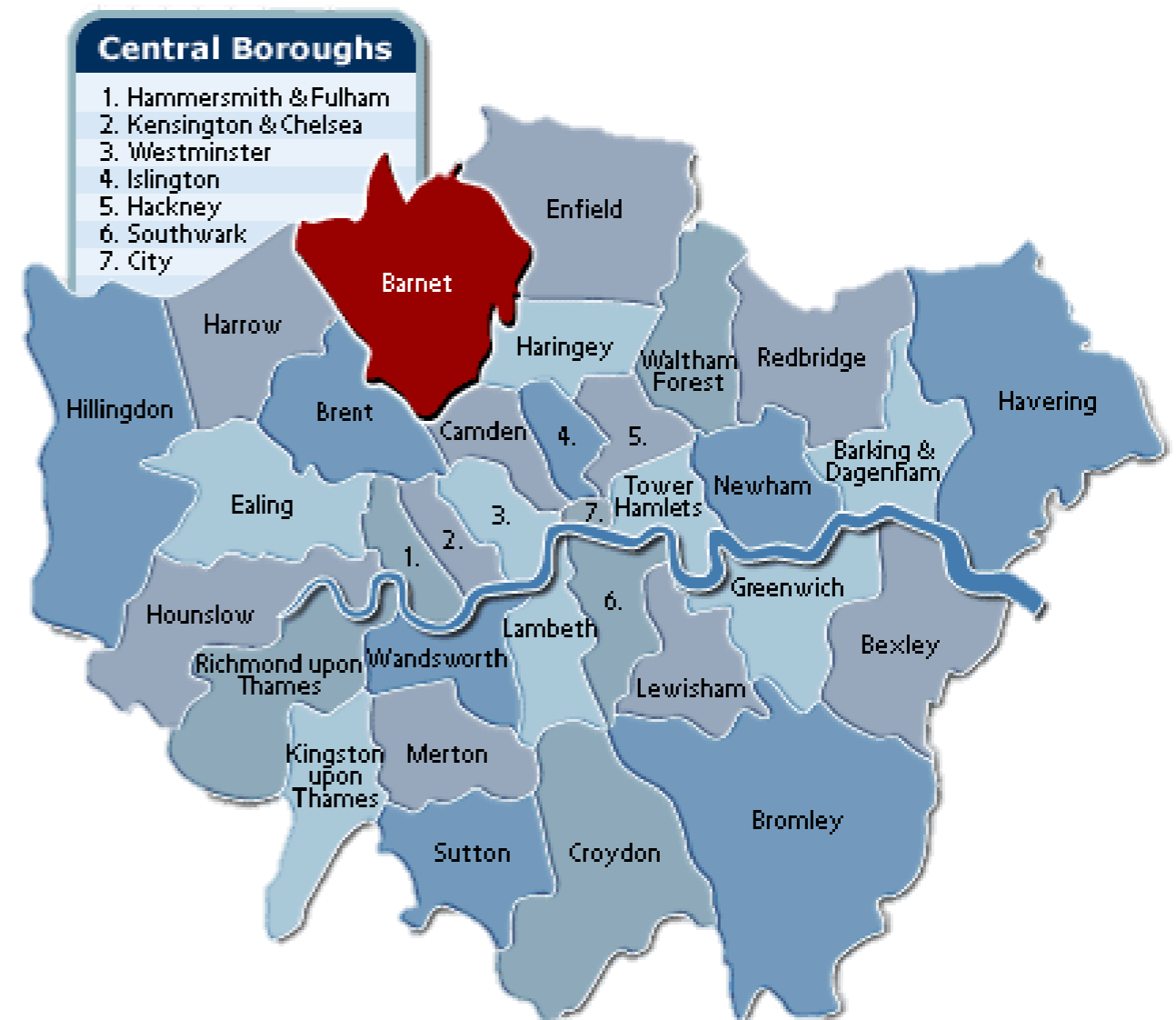
Caring for **people**, our **places** and the **planet**

London Borough of Barnet

Barnet is an outer London Borough

It has the second biggest population of all 32 boroughs, after Croydon

c. 33% of the borough is green/ open space. This includes parks, cemeteries, allotments, designated sites etc.



London Borough of Barnet

- **Kat set up an internal food growing working group which included:**

Greenspaces

Public health

Tree team

Barnet Homes



Caring for **people**, our **places** and the **planet**

Food Growing in Barnet



Existing Food Growing Organisations in Barnet



Caring for people, our places and the planet

Potential Funding

‘The Barnet Prevention Fund’ – internal funding held by Public Health

It was set up to provide seed money for pilot projects to put prevention principles into practice

Examples of projects commissioned in 22/23 and 23/24 cover:

avoiding homelessness,

promoting road safety,

testing energy efficient measures,

supporting children and young people with autism.

Project Idea

*“The best way to ensure that residents can live healthy and fulfilling lives, in safe and thriving communities, is to tackle problems **before they arise** – a focus on prevention.”*



Teaching people how to grow food and run their own growing space

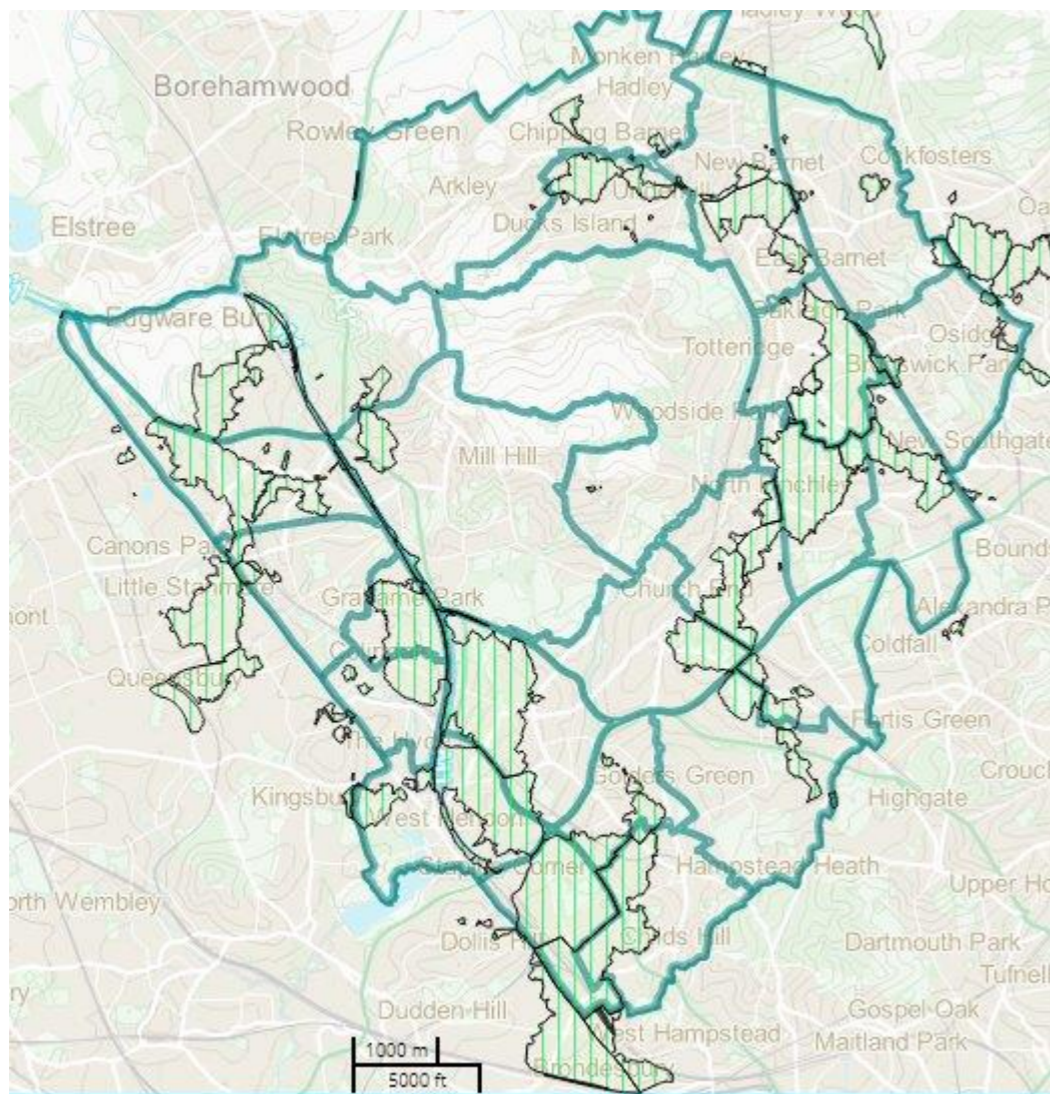


Barnet Community Food Growing Network –
Leadership Programme

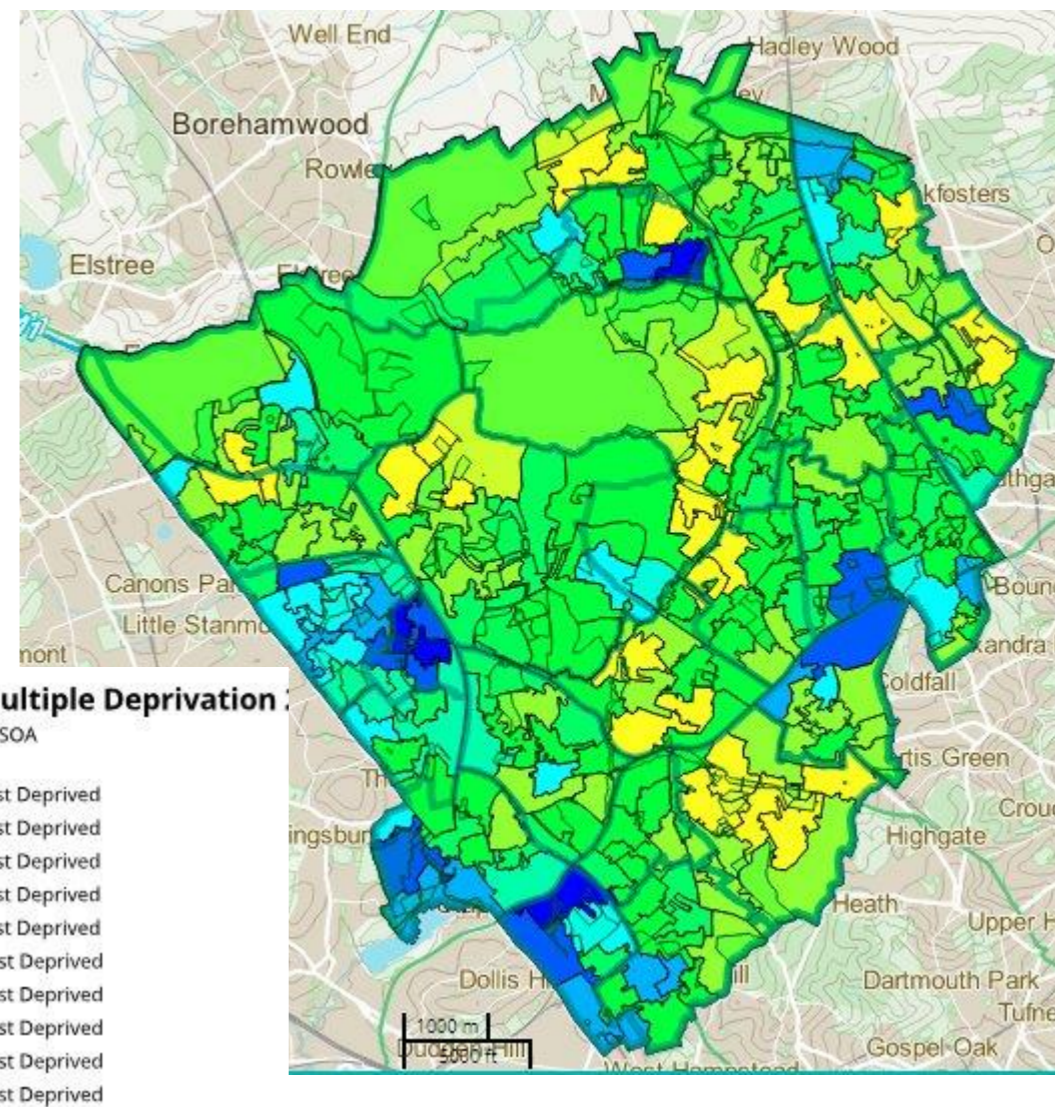
Budget

Local Community Growers will be paid for 4 hours a week throughout the 12 months for their time developing the training materials and delivering the training. 4 people x 4 hours x 52 weeks @£30	£24,960
Site preparation: Greenspaces team will use their existing contractors for these small-scale works. £3,000 x 4 sites	£12,000
Community Events: 1 at each of the 4 sites	£2,400
Training materials	£400
Tools	£4,000
TOTAL COST:	£43,760

Selecting the Sites



Areas deficient in access to nature



Areas of deprivation

Selecting the Sites

Site Name	Location (Ward)	Index of Multiple Deprivation at LSOA level themed by London deciles	Area of Deficiency in access to Greenspace	Growing Space Available (m2)	Accessible by Public Transport	Parking Nearby	Water Supply	Existing Building/ Storage and What3Words Location
Hollickwood Park	Technically in Haringey but Barnet owned and managed. Adjacent to Friern Barnet ward	Surrounding residential area is in 20% most deprived (Friern Barnet)	No	Revive community garden at community centre with the possibility of using areas of the park.	8 min walk from bus stop Pembroke Road/St Peters Church (43 & 134).	Yes, surrounding residential streets	Yes, potentially from Freehold Community Centre	Yes, potentially could negotiate with Freehold Community Centre
Church Farm Open Space - Saxons Field	East Barnet	No	No, but some of the surrounding area to the west is an AOD.	At least 250m2	2 min walk from bus stop St Mary's Church (184), 6 min walk from bus stop Parkside Gardens (382).	Yes, surrounding streets	Yes potentially from the church	Potentially a lock box or somewhere at the church?
Basing Hill	Childs Hill	No, but surrounding area to the west is within 10-40% most deprived.	Yes, as is most of the surrounding area to the west and south west.	250m2 TBC	11 min walk from Golders Green Tube Station (northern line), 11 min walk from Golders Green Bus Station (268), 9 min walk from bus stop Hoop Lane (210).	Parking restrictions between 11-12 daily on surrounding residential streets.	Yes, tap on outside of pavillion used by friends group.	Yes, potentially in pavillion building (also toilets in there).
Montrose Park	Burnt Oak	Yes, and surrounding area is within 10-40% most deprived.	No	At least 250m2	12 min walk from Burnt Oak tube station (northern line), 7 min walk from bus stop Oak Gardens (114 or 302).	Limited without a permit.	Yes, potentially from Montrose hub Café.	Yes, potentially in Tramshed building or Café.

Caring for people, our places and the planet

Recruiting Participants

- Leaflets & Posters
- Social Media
- Councillors
- Barnet First
- Existing Networks

Do you want to be a part of community food growing in Barnet?

BARNET FOOD PLAN 2022-2027

Join Barnet's Community Food Growing Network

Become a food growing leader!

We're creating 4 new community food growing spaces in Barnet in 2024, and you're invited to take part!

- By joining the network, you will take a new growing space from bare ground to a thriving growing space in 2024.
- Learn from some of the borough's most experienced food growers.

All you need to join is an interest in food growing! We'll help you build your knowledge and confidence so you're ready to get going.

You will need to be available for a few hours every other week between April and December 2024.

Apply before 21 March 2024
forms.office.com/e/sTtH9UpUyc
or scan this QR code.

For more information,
email food@barnet.gov.uk

BARNET LONDON BOROUGH

Caring for people, our places and the planet

Do you want to be a part of community food growing in Barnet?

BARNET FOOD PLAN 2022-2027

Join Barnet's Community Food Growing Network

Barnet Council are training a new group of community food growing leaders. We recognise that community gardens don't spring up out of nowhere. They require leaders! Leaders are the people with the commitment, dedication, knowledge and experience to start or re-invigorate a growing space and support people to participate.

Become a food growing leader!

We're creating 4 new community food growing spaces in Barnet in 2024, and you're invited to take part!

- By joining the network, you will take a new growing space from bare ground to a thriving growing space in 2024.
- Learn from some of the borough's most experienced food growers.

All you need to join is an interest in food growing! We'll help you build your knowledge and confidence so you're ready to get going.

You will need to be available for a few hours every other week between April and December 2024.

We'll be establishing new food growing spaces in:

1. Montrose Playing Field, Burnt Oak, NW9 5AT
2. Basing Hill Park, Childs Hill, NW11 8QY
3. Church Farm Open Space, EN4 6XE
4. Hollickwood Park, near Freehold Community Centre, N10 2EY

Learn more and apply before 21 March 2024
forms.office.com/e/sTtH9UpUyc
or scan this QR code.

For more information,
email food@barnet.gov.uk

BARNET LONDON BOROUGH

Caring for people, our places and the planet

Caring for people, our places and the planet

Course Content

Week no	Topic	Who to write / Status	Lesson plan
1.1	Soil <ul style="list-style-type: none"> • Texture and structure • Working out how to manage each soil type • No dig vs raised bed vs digging 	Wendy Done	https://docs.google.com/document/d/1Cvsy7opRUXx6fQv_rhzfd69T-xf9WO/edit
1.2	Composting <ul style="list-style-type: none"> • Organic matter – what, why and how (eg composts, wormery, leaf mould, bokashi, etc). • Potential Issues with composting in community spaces • How to build a compost bin 	Deena Done	https://docs.google.com/document/d/1dKiXZ0CNHzqpe13A5JCkpziN1U3hXgl2EtLvZPIth2Y/edit
1.3	Botany <ul style="list-style-type: none"> • Parts of a plant - biology, perennials, annuals • Plant life cycles • Plant ID • Pollination, fertilisation, seed setting 	Deena Done	Basics of botany https://docs.google.com/document/d/1sJUa93zbpanWXA9bcEL5KPwWdPegvI8UaFhdYrzQhw/edit Pollination, fertilisation, germination https://docs.google.com/document/d/1zwmmHF_1BMTWAzf1VBXtCsJ1Vx4azyW_DTnljdVWUvw/edit
1.4 1.5 1.6	Propagation good practice <ul style="list-style-type: none"> • Seeds • Potting on • Cuttings 	Deena Done	Seed sowing https://docs.google.com/document/d/1DlphFkT2RRnRazp2efzbiC9OktzZFwa_jMEfGEID74c/edit

Freehold Community Centre



Caring for **people**, our **places** and the **planet**

Church Farm Open Space



Caring for **people**, our **places** and the **planet**

Church Farm Open Space



Caring for people, our places and the planet

Montrose Park



Caring for **people**, our **places** and the **planet**

www.barnet.gov.uk

BARNET
LONDON BOROUGH

Montrose Park



Caring for **people**, our **places** and the **planet**

Basing Hill



Caring for **people**, our **places** and the **planet**

Lessons Learnt

- **Diverse mix of people – 170 people applied**
- **Day/times of sessions resulted in dropouts**
- **No screening of participants**
- **Objective not quite met**
- **Little/no vandalism occurred**



Next Steps

- **Connecting participants with spaces**
- **Apply lessons learnt to new project**
- **Send out surveys to participants**
- **Apply for funding for next year**



Questions?



Caring for people, our places and the planet

www.barnet.gov.uk

BARNET
LONDON BOROUGH